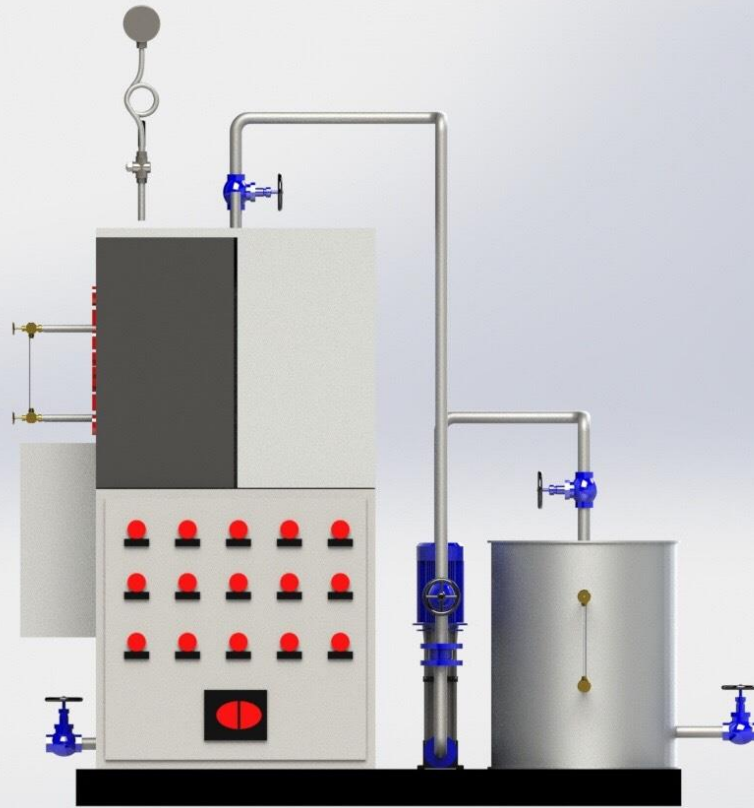


Electric Steam Boiler

CAPACITY FROM 20 KW TO 500 KW
ALTERNATIVE STEAM RATING FROM 30
KG/H TO 765 KG/H

About GETABEC



GETABEC can manufacture Steam Boiler, Hot Water Boiler, Waste Heat Boiler, Thermal Oil Heater and Pressure Vessel comply with ASME, EN, PED (CE Mark), DIN, BS, etc. Our work-shops have been qualified and received international ISO 9001:2015 certificates, Certificates Registration No. 04100630469 by TUV NORD and S, U, R, PP as authorized manufacturer of ASME code for Boiler and Pressure Vessel. GETABEC also manufactures Boiler under license of SCHNEIDER-KESSEL Berlin for Fire-Tube Boiler, Eckrohrkessel (ERK) Berlin for Water Tube and Waste Heat Boiler.

GETABEC is a long-time cooperated partner of SAACKE Burner, Bremen for Sales and service in Thailand. GETABEC has marketed their Burners and service world-wide and well accepted by many famous international companies.



“To be a global leader in Industrial Steam Boiler and energy solution provider”

CERTIFICATES

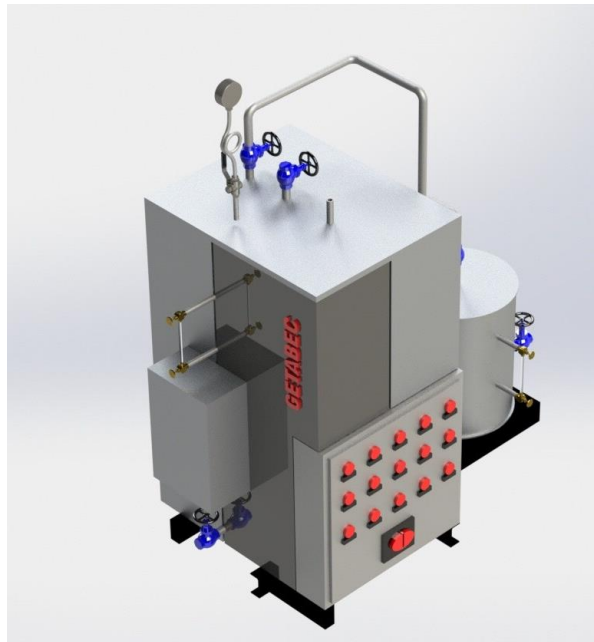


ELECTRIC BOILER

Often, factories that use Boiler or Hot water heater using fuels from oil and gas. Which may affect pollution and the environment. Because there is a fuel handling and combustion system. Therefore, lead GETABEC to the idea and design of an Electric boiler.

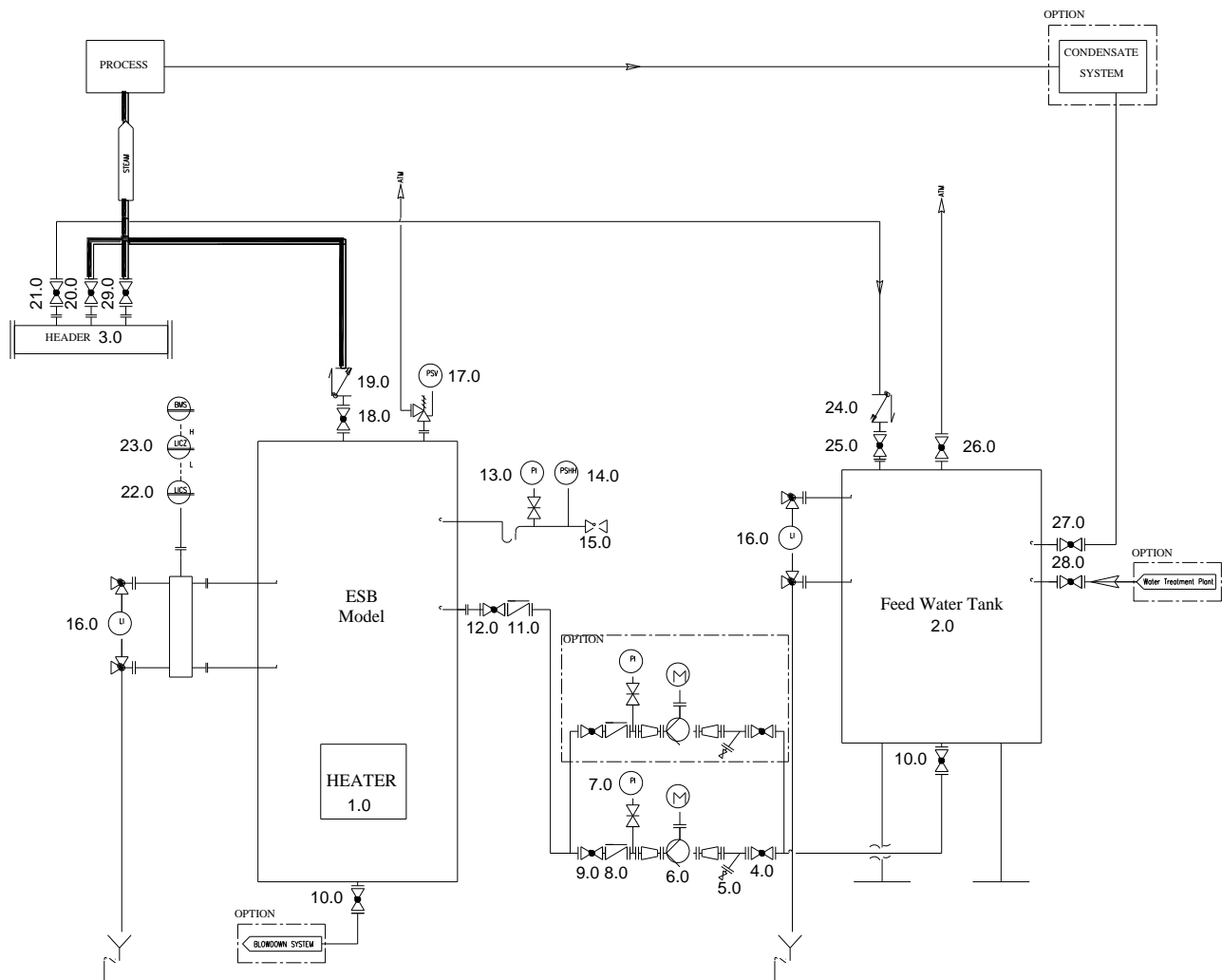
Electric boilers are efficient in producing steam quickly and are easy to install. Especially in areas with limited space and a boiler without burning fuel. It is clean because there is no fuel handling and combustion system. Suitable for a small amount of steam production but using electrical energy to produce steam.

Our packaged unit includes safety valve, blowdown, gauge glass set, steam outlet valve, boiler feed pump and level controls necessary fitting as standard. The control panel is mounted to the outside of the unit to ensure easy access and to avoid overheating of the controls and wiring.



“GETABEC is power, power is steam”

INSTRUMENT & EQUIPMENT



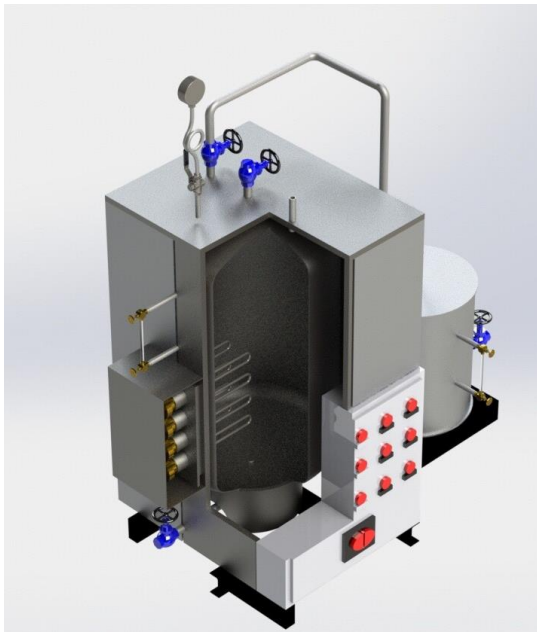
- | | | |
|---|--|--|
| 1.0 Heating Elements | 12.0 Feed Shut off Valve Boiler Side | 23.0 Level Controller |
| 2.0 Feed Water Tank | 13.0 Pressure Indicator | 24.0 Non Return Steam Heating |
| 3.0 Steam Distribution Header | 14.0 Safety Pressure Switch | 25.0 Feed Shut off Valve Steam Heating |
| 4.0 Feed Shut off Valve Suction Side Pump | 15.0 Valve for Manostat Pipe | 26.0 Feed Water Tank Vent |
| 5.0 Strainer suction feed water pump | 16.0 Level Indicator | 27.0 Feed Shut off Valve Condensate Return |
| 6.0 Feed Water Pump | 17.0 Safety Valve | 28.0 Feed Water Treatment Shut off Valve |
| 7.0 Pressure Indicator Discharge Side Pump | 18.0 Main Steam Valve | 29.0 Shut off Valve To Process |
| 8.0 Non Return Valve Discharge Side Pump | 19.0 Non Return Main Steam Valve | |
| 9.0 Feed Shut off Valve Discharge Side Pump | 20.0 Steam Onlet Shut off Valve | |
| 10.0 Bottom Blow down valve | 21.0 Shut off Valve To Feed Water Tank | |
| 11.0 Non Return Valve Boiler Side | 22.0 Level Sensor | |

TECHNICAL DATA (ESB-Model)

Model	Heat Capacity	Steam Rating	Total Water Volume	Cylinder Diameter	Cylinder Length	Heater Capacity/ Piece	Heater Length	Heating Elements
	kW	kg/hr	Liter	mm	mm	kW	mm	pcs
ESB-V,H-20/10	20	30	150	500	570	5	400	4
ESB-V,H-40/10	40	60	150	500	570	5	400	8
ESB-V,H-60/10	60	90	150	500	570	5	400	12
ESB-V,H-80/10	80	120	230	500	965	5	400	16
ESB-V,H-100/10	100	150	270	500	1165	5	400	20
ESB-V,H-120/10	120	180	340	600	965	5	400	24
ESB-V,H-160/10	160	245	340	600	965	5	400	32
ESB-V,H-200/10	200	300	395	600	1165	5	400	40
ESB-V,H-300/10	300	450	550	600	1730	5	400	60
ESB-V,H-400/10	400	600	780	700	1765	5	400	80
ESB-V,H-500/10	500	765	940	700	2165	5	400	100

- At nominal capacity 8 barg and 100 °C
- Equipment and complete dimensions may be accordance with Customer's project specification.
- The connecting between heating elements and shell boiler by socket threaded NPS 1-1/2.

Immersion Heater



- The heating elements shall be individually mounted, rod type, and field replaceable with standard tools.
- The heating watt density shall not exceed 10 W/sq-cm².
- The heating elements shall be Stainless steel ANSI304/L

DELIVERY WORLDWIDE



GETABEC PUBLIC COMPANY LIMITED

335/7 Srinakarin Road, Nongbon,
Pravej, Bangkok 10250

Bangplee Factory

Bangplee Industrial Estate,
609 Moo 17 Bangna-Trad Rd.,
Bangsaothong, Bangplee,
Samutprakarn 10570

Tel : 02-7051400-4

Fax : 02-7056575

Website : <http://www.getabecboiler.com/>

E-mail : gtm@getabecboiler.com